

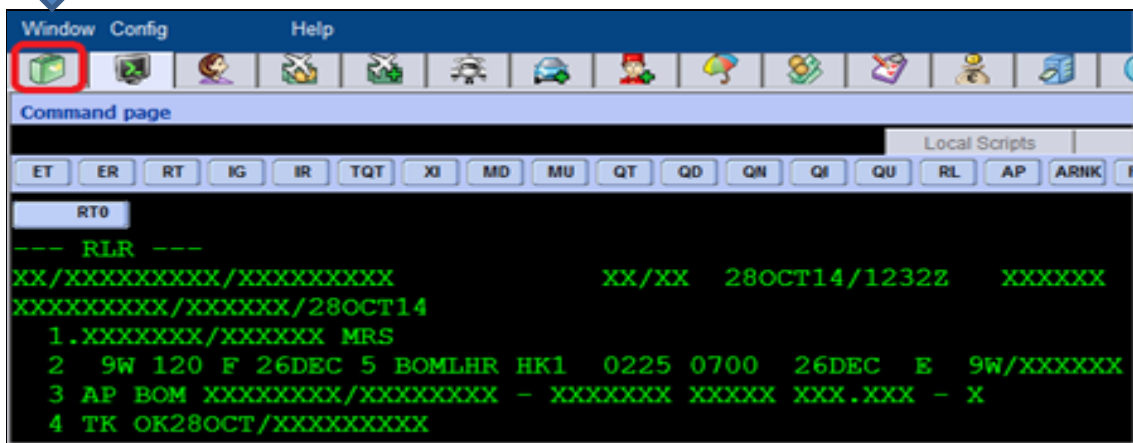
**APIS INFORMATION ADDITION THROUGH ASP GRAPHICAL MODE**

In order to ease Travel Agent’s workflow, we recommend adding the APIS information through Graphical Page (GUI) on Amadeus Selling Platform.

Travel Agents can easily update "DOCS, DOCO and DOCA" information, without performing manual entries, within few steps, thus saving time.

**Illustration:**

**Step 1:** Retrieve the PNR in graphical mode by clicking on the icon (PNR).



**Step 2:** Click on APIS displayed under services column in GUI page as shown below:

Amadeus Customer Service	Live Chat function in Vista	Mail to helpdesk	Know More about Amadeus	Amadeus e-Learning
24 X 7 Access to Amadeus Helpdesk at Nationwide Toll free	Connect to Amadeus Helpdesk through Live Chat Function in Amadeus Selling Platform	<a href="mailto:help@amadeus.in">help@amadeus.in</a>	<a href="http://www.amadeus.in">www.amadeus.in</a>	Learn Amadeus using self-paced learning solution Amadeus e-Learning <a href="http://www.e-learning.amadeus.com">www.e-learning.amadeus.com</a>

# News Flash

PNR Main Auxiliary MCO Address Fare elements Services Remarks Seci

Agent: RGSU EHD Responsible: BOM1A0980 Queuing: BOM1A0980 Company: 1A Record locator: 5LPYA6

Main Add: Name - Contact - Frequent flyer - Ticket arrangement - Miscellaneous remarks - Received from

1 KANSARA RASHMI MRS  
AP BOM 24827700/30417000 - AMADEUS INDIA PVT.LTD - A  
TK OK 28OCT BOM1A0980

Itinerary  
2 HK1 9W 120 F BOM 2 26DEC 02:25 LHR 26DEC 07:00

Insurance  
MCO  
Billing/ mailing address Add: Billing/ mailing address

Fare elements Add: Payment - Original payment - Validating carrier - Commission - Endorsement - Fare discount - Original issue - Ex

Services Add: Seat - Frequent flyer - **APIS** Keyword - Other services - Meal - Extra seat - Extra air services

Remarks Add: Accounting - Confidential remark - Invoice/itinerary remark - Miscellaneous remark - Corporate remark

Security Add: Security

**Step 3:** Select the appropriate (DOCS, DOCO, DOCA) with the given drop down arrow and click on **OK** tab once the details are filled.

Main Auxiliary MCO Address Fare elements Services Remarks Security

Seat  
Frequent flyer  
APIS  
Keyword (SK)  
Other services (OS)  
Meal  
Extra seat  
Extra air services

Primary travel document information (DOCS)

Type	Issuing Country	Number	Pax Nationality	Date of Birth	Gender of Pax	Exp Date	Surname	Middle name	First Name	Airline
P	IND	1234567	IND	22JUN85	F	26JAN16	XXXXXXXX		XXXXXX	YY

Secondary travel document information (DOCO)

Passenger Place of Birth	Travel Document Type	Visa Document Number	Visa Document Place of Issue	Visa Document Issue Date	Applicable country
					<input type="checkbox"/> Infant

Passenger address information (DOCA)

Type of Address	Country	Address Details	City	State/Province/Country	ZIP Code
					<input type="checkbox"/> Infant

OK

### Amadeus Customer Service

24 X 7 Access to Amadeus Helpdesk at Nationwide Toll free

### Live Chat function in Vista

Connect to Amadeus Helpdesk through Live Chat Function in Amadeus Selling Platform

### Mail to helpdesk

[help@amadeus.in](mailto:help@amadeus.in)

### Know More about Amadeus

[www.amadeus.in](http://www.amadeus.in)

### Amadeus e-Learning

Learn Amadeus using self-paced learning solution Amadeus e-Learning [www.e-learning.amadeus.com](http://www.e-learning.amadeus.com)

**Step 4:** Click on the Save Tab as shown below to save the details in the PNR.



For more information please contact your nearest Amadeus Helpdesk.

Amadeus Customer Service	Live Chat function in Vista	Mail to helpdesk	Know More about Amadeus	Amadeus e-Learning
24 X 7 Access to Amadeus Helpdesk at Nationwide Toll free	Connect to Amadeus Helpdesk through Live Chat Function in Amadeus Selling Platform	<a href="mailto:help@amadeus.in">help@amadeus.in</a>	<a href="http://www.amadeus.in">www.amadeus.in</a>	Learn Amadeus using self-paced learning solution Amadeus e-Learning <a href="http://www.e-learning.amadeus.com">www.e-learning.amadeus.com</a>